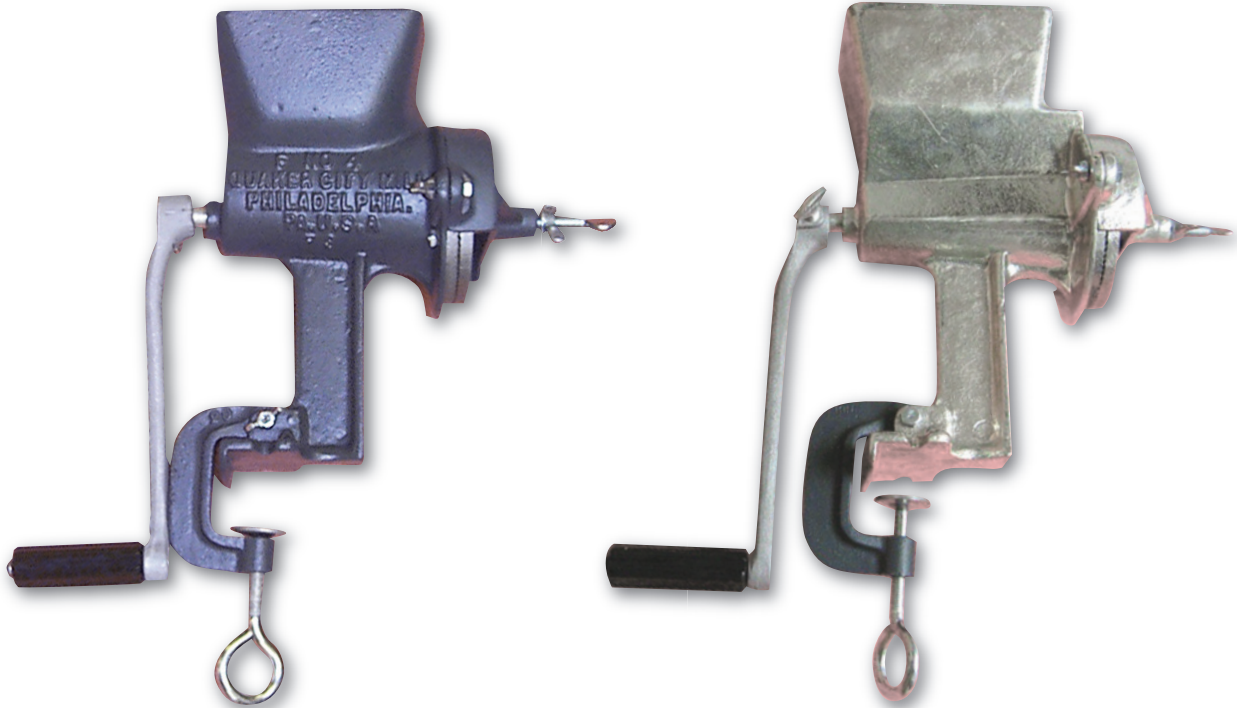


F-4 Handmill

Assembly Instructions



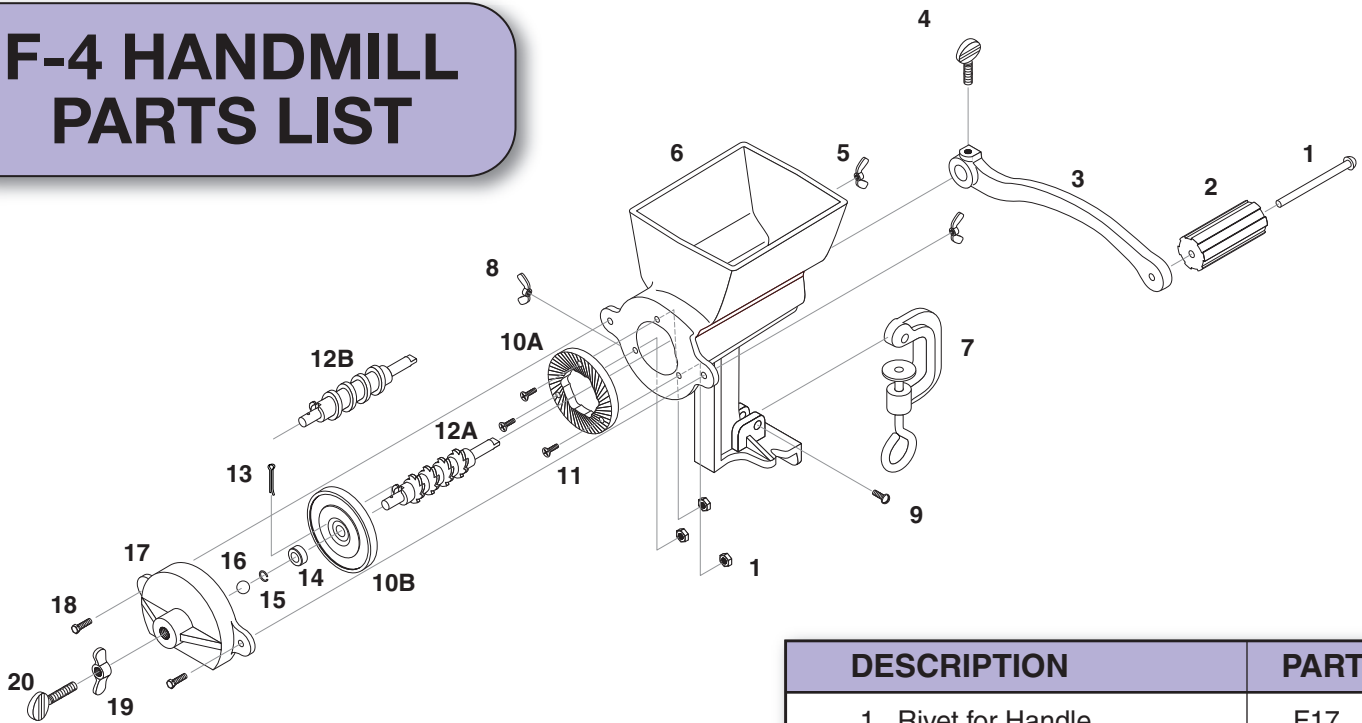
Typical Applications

- Soft or hard grains for cereal & bread
- Corn
- Coffee
- Pharmaceuticals
- Chemicals
- Ores
- Coal
- Nut meats
- Peanuts
- Soil tests
- Iron turnings
- Lab sample preparation

Features

- Largest capacity, easiest operating hand mill available.
- Grinder unit construction is sturdy cast iron. Optional coating for food applications.
- Grinding plates are made of hard iron alloy designed for clog resistance and long life.
- Plate clearance easily adjusted by hand to change mesh.
- Choice of 4 B Plates for fine grinding or 4 CS Plates for coarse grinding.
- Choice of Tooth Feed for dry grinding or Worm Feed for wet or oily grinding.
- Supplied with screw clamp for table top mounting.

F-4 HANDMILL PARTS LIST



Feed/Handle Assembly: The round end of the F-2 Tooth Feed (without hole) is assembled to the handle.

Feed/Revolving Plate Assembly: The 4B revolving plate, then the F-23 Plate Collar are inserted on the round end of the feed that has the hole. Next, the F-50 Cotter Pin is put through the hole in the feed and bent back. Note there is supposed to be a bit of play in this assembly.

The 4B Stationary Plate: This plate is screwed directly into the hand mill body with the F-48 Plate screws and nuts..

The Case Cover (F 3 1/2X*) has a F-13 Steel Ball and F-16 Retaining ring inserted inside the cavity of the case cover. The F-63 Wing Nuts and bolts are used to attach the case cover to the grinding head.

F-15 Jam Lever and F-14 Temper Screw: These are inserted into the center hole on the outside of the case cover. This assembly allows for adjusting the distance between the plates for different grinding fineness.

*F 3 1/2X_B is painted F 3 1/2X_P is plated

DESCRIPTION	PART #
1 Rivet for Handle	F17
2 Plastic Handle	F19
3 Crank Handle	F18
4 Thumb Screw	F18A
5 Wing Nut for Case Cover	F63
6 Grinder Mill Body	F3
7 Table Clamp Assembly	F20
8 Nut for Clamp Assembly	F47
9 Bolt for Clamp Assembly	F47
10A Fine Plate	4B
10B Coarse Plate	4CS
11 Plate Screws and Nuts	F48
12A Tooth Feed (dry grinding)	F2
12B Worm Feed (wet or oily)	F2 1/2
13 Cotter Pin	F50
14 Plate Collar	F23
15 Retaining Ring	F16
16 Steel Ball	F13
17 Case Cover	F3 1/2X
18 Bolt for Case Cover	F63
19 Jam Nut Lever	F15
20 Temper Screw	F14

SPECIFICATIONS	
Capacity of Hopper:	50 cu. in. (approx. 2 lbs.)
Overall Height:	14 in.
Weight:	12 lbs.
Table Top to Discharge:	4 in.
Diameter of Grinding Plates:	4 in.
Output Capacity:	10 lbs. per hr.
Maximum Fineness:	75 to 100 mesh
Output Capacity & Fineness of Grinding varies with material.	